

Regular Council Meeting of the Town of Legal in the Province of Alberta held in the Town Council Chambers, April 6th, 2010 commencing at 7:00 PM.

PRESENT: Mayor St. Jean, Councillor Bennett, Councillor Ouellette

STAFF: Corey Brown – Chief Administrative Officer
Susan Oberg – Manager of Finance
Robert Proulx – Manager of Operations
Yvonne Cyr – Administrative Assistant

ABSENT: Deputy Mayor Baril, and Councillor Hughes

CALL TO ORDER

Mayor St. Jean called the meeting to order at 7:00 PM

ADDITIONS /DELETIONS TO THE AGENDA

Additions

6.1 GSACRD – Community Stakeholder Meeting.

ADOPTION OF AGENDA

8208

Resolution #8208

Moved by: Councillor Bennett

RESOLVED that the Agenda for the April 6th, 2010 Regular Meeting of Council be adopted as amended.

CARRIED

ADOPTION OF MINUTES

8209

Resolution #8209

Moved by: Councillor Ouellette

RESOLVED that the Minutes of the Regular Meeting of March 15th, 2010 be adopted as presented.

CARRIED

DELEGATION

Certificate of Appreciation Presentations

On behalf of the Town of Legal Council, Mayor St Jean presented certificates of appreciation to the Hammond Family for their dedication to the Fete au Village, Sturgeon Valley Fertilizers Ltd. for their donation of a defibrillator for the arena, and the Knights of Columbus for their monetary donation to the gazebo. Mayor St Jean indicated that their contributions to the community were invaluable.

Core Lyncs

Mayor St Jean welcomed CoreLyncs to the meeting and invited them to make their presentation. After an introduction of their committee they gave a brief review of projects they have done in the Legal and Morinville area and would like to introduce a new program call 40 Developmental Assets. The program is about training and educated adults of the community to recognize what contributions that the youth have to offer by actively engaging the youth through empowerment and positive recognition. They indicated that in order to launch the program it would need the participation of council, town staff and the RCMP to be trained on how to recognize these 40 Developmental Assets and apply them to the youth of our community. Council had a positive response to the program and will await the information regarding training to discuss it further.

Councillor Bennett

No report.

Councillor Ouellette

No report.

8214

Resolution #8214

Moved by: Councillor Ouellette

RESOLVED that the reports be accepted.

CARRIED

CORRESPONDENCE

2010 Spring into Spring Lifestyle Expo - Invitation
Received as information.

Town of Bon Accord Harvest Days - Invitation
Received as information.

Sturgeon County - Subdivision Application
Council had no comments or concerns.

Electoral Boundaries Commission
Received as information.

Sturgeon County - Municipal Development Plan
Received as information.

AAMDC - Gold Tournament
Received as information.

Le Tour de l'Alberta - Sponsorship
Received as information

WCB - Day of Mourning
Received as information.

Heritage Awards
Received as information.

Royal Canadian Legion - Invitation
Received as information.

GSACRD – Community Stakeholder Meeting
Received as information.

8215

Resolution #8215

Moved by: Councillor Bennett

RESOLVED that the correspondence be accepted.

CARRIED

NEW BUSINESS

Alberta Municipal Affairs - MSP Grant

8216

Resolution #8216

Moved by: Mayor St Jean

ADJOURNMENT

8222

Resolution # 8222

Moved by: Councillor Bennett

RESOLVED that the meeting be adjourned at 9:48 PM.

CARRIED

Mayor

Chief Administrative Officer

CAO - Report to Council

Date: April 6, 2010

FCSS

Ruthann Weeks

RCMP - Meet the community night scheduled for April 14 6:30 – 8:30 mailers have gone out

Assessment Review Board

Municipal Affairs felt three members was the minimum for a board however they will try to find a piece of legislation that will indicate this.

I will ask the other CAOs at the next regional meeting if they would be interested in a joint board so that there are a pool of trained people.

Integrated Community Sustainability Plan (ICSP)

ICSP Has been submitted. Dave Winch from Alberta Infrastructure will follow up to ensure it has been logged in the system. A revised 10 year capital plan will be built and submitted to council for review so that it may be forwarded to Alberta Infrastructure in order to receive the Gas Tax grant.

Network and Computers

Long stemming issues with tape backup failures have prompted much needed work on all systems. Preparations for a backup server are underway with repairs to existing equipment. Email will eventually be hosted on site in order to filter spam for council and staff.

Chief Administrative Officer
Corey Brown

2010 INFRASTRUCTURE IMPROVEMENT PROGRAM

Now that we have a more accurate budget number for road and infrastructure improvements we would like to proceed with the improvements at the following locations. (see attached map) Although the budget number indicated that there would be a shortage of funds to cover the cost, AECOM Engineering has indicated that the preliminary cost are inflated in a couple of ways:

- Adding additional quantity amounts, and
- Using an average per unit cost (meaning that if Border Paving was the lowest bid at \$100.00 per meter of concrete and Park Paving was the highest bidder at \$300 per meter the unit price would be the average of \$200.00 per meter)

It would be my recommendation that we proceed with the above improvements and have one area as an optional item. Once tender are received we can add or delete the optional items.

ICE PLANT

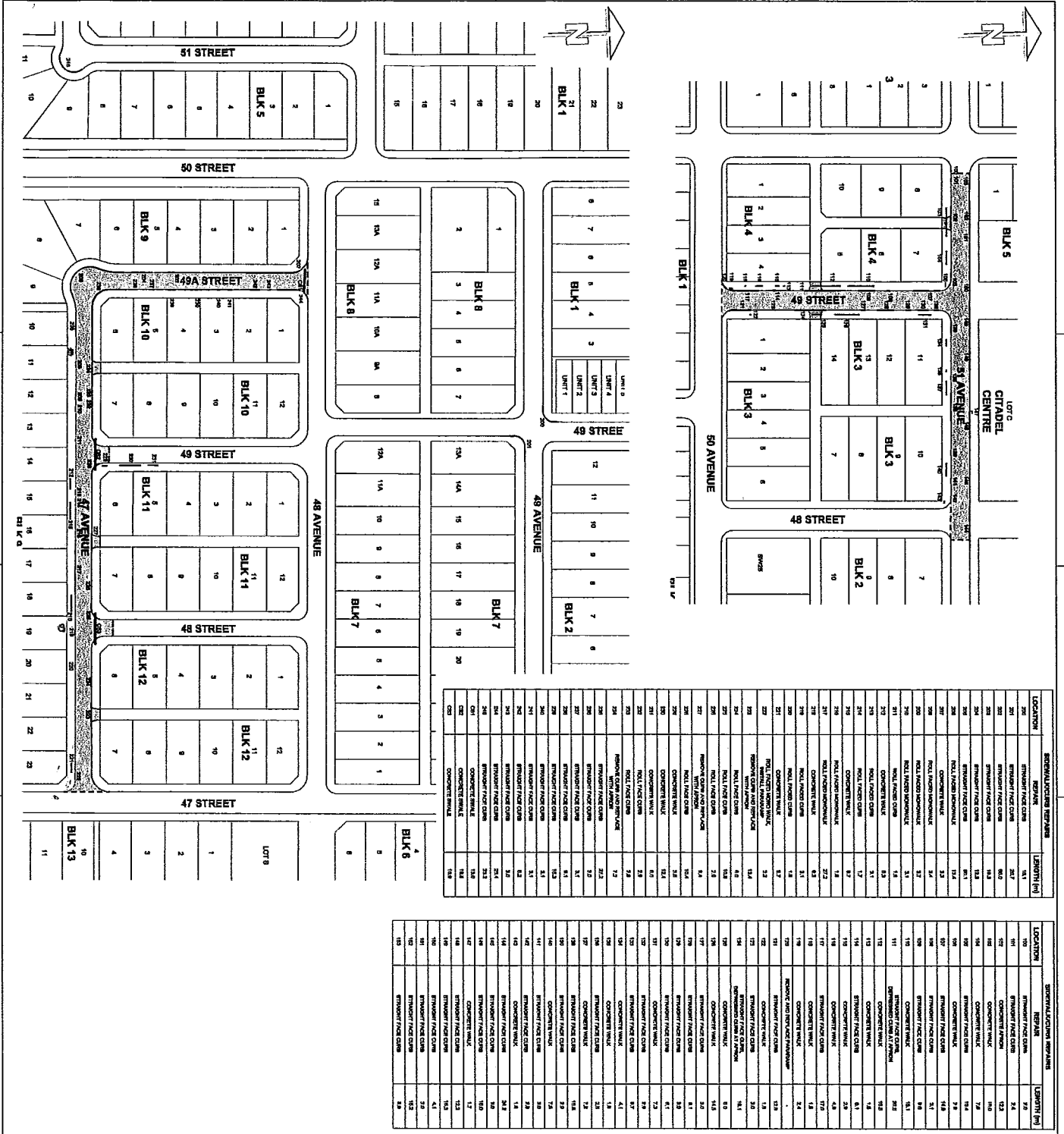
I have expressed concerns with Cimco Refrigeration on the new ice plant as items that have had warranty work are now failing and need repair again. Although now approaching three years of operation (the warranty was only one year) there was a concern at warranty and I feel the cost to fix the issues still lie in the hands of Cimco and their product suppliers.

FIRE BAN

Sturgeon County, Bon Accord, Gibbons have implemented a fire ban until moisture is received. The Morinville fire dept is meeting tonight to discuss the ban. It may be that a total ban be implemented with the exception of approved fire pit which would be inspected by the MFD and a permit issued which is valid for a period of five years. It would be my recommendation as well as Tracy Roulston Fire Chief that a ban be implemented and this would solve some confusion.

Knights of Columbus Donation

As you probably know the Knights have donated \$6000.00 towards the gazebo project. Because this was lottery monies we cannot use the project cost from previous years against the donation. What would you think if we constructed a mini gazebo 20 ft x 20 ft beside the existing one which could be used for cooking or a bar area.



LOCATION	REMARK	LENGTH (ft)
290	STRAIGHT FACE CURB	16.1
291	STRAIGHT FACE CURB	20.2
292	STRAIGHT FACE CURB	80.2
293	STRAIGHT FACE CURB	116.3
294	STRAIGHT FACE CURB	133.4
295	STRAIGHT FACE CURB	150.5
296	STRAIGHT FACE CURB	167.6
297	STRAIGHT FACE CURB	184.7
298	STRAIGHT FACE CURB	201.8
299	STRAIGHT FACE CURB	218.9
300	STRAIGHT FACE CURB	236.0
301	STRAIGHT FACE CURB	253.1
302	STRAIGHT FACE CURB	270.2
303	STRAIGHT FACE CURB	287.3
304	STRAIGHT FACE CURB	304.4
305	STRAIGHT FACE CURB	321.5
306	STRAIGHT FACE CURB	338.6
307	STRAIGHT FACE CURB	355.7
308	STRAIGHT FACE CURB	372.8
309	STRAIGHT FACE CURB	389.9
310	STRAIGHT FACE CURB	407.0
311	STRAIGHT FACE CURB	424.1
312	STRAIGHT FACE CURB	441.2
313	STRAIGHT FACE CURB	458.3
314	STRAIGHT FACE CURB	475.4
315	STRAIGHT FACE CURB	492.5
316	STRAIGHT FACE CURB	509.6
317	STRAIGHT FACE CURB	526.7
318	STRAIGHT FACE CURB	543.8
319	STRAIGHT FACE CURB	560.9
320	STRAIGHT FACE CURB	578.0
321	STRAIGHT FACE CURB	595.1
322	STRAIGHT FACE CURB	612.2
323	STRAIGHT FACE CURB	629.3
324	STRAIGHT FACE CURB	646.4
325	STRAIGHT FACE CURB	663.5
326	STRAIGHT FACE CURB	680.6
327	STRAIGHT FACE CURB	697.7
328	STRAIGHT FACE CURB	714.8
329	STRAIGHT FACE CURB	731.9
330	STRAIGHT FACE CURB	749.0
331	STRAIGHT FACE CURB	766.1
332	STRAIGHT FACE CURB	783.2
333	STRAIGHT FACE CURB	800.3
334	STRAIGHT FACE CURB	817.4
335	STRAIGHT FACE CURB	834.5
336	STRAIGHT FACE CURB	851.6
337	STRAIGHT FACE CURB	868.7
338	STRAIGHT FACE CURB	885.8
339	STRAIGHT FACE CURB	902.9
340	STRAIGHT FACE CURB	920.0
341	STRAIGHT FACE CURB	937.1
342	STRAIGHT FACE CURB	954.2
343	STRAIGHT FACE CURB	971.3
344	STRAIGHT FACE CURB	988.4
345	STRAIGHT FACE CURB	1005.5
346	STRAIGHT FACE CURB	1022.6
347	STRAIGHT FACE CURB	1039.7
348	STRAIGHT FACE CURB	1056.8
349	STRAIGHT FACE CURB	1073.9
350	STRAIGHT FACE CURB	1091.0
351	STRAIGHT FACE CURB	1108.1
352	STRAIGHT FACE CURB	1125.2
353	STRAIGHT FACE CURB	1142.3
354	STRAIGHT FACE CURB	1159.4
355	STRAIGHT FACE CURB	1176.5
356	STRAIGHT FACE CURB	1193.6
357	STRAIGHT FACE CURB	1210.7
358	STRAIGHT FACE CURB	1227.8
359	STRAIGHT FACE CURB	1244.9
360	STRAIGHT FACE CURB	1262.0
361	STRAIGHT FACE CURB	1279.1
362	STRAIGHT FACE CURB	1296.2
363	STRAIGHT FACE CURB	1313.3
364	STRAIGHT FACE CURB	1330.4
365	STRAIGHT FACE CURB	1347.5
366	STRAIGHT FACE CURB	1364.6
367	STRAIGHT FACE CURB	1381.7
368	STRAIGHT FACE CURB	1398.8
369	STRAIGHT FACE CURB	1415.9
370	STRAIGHT FACE CURB	1433.0
371	STRAIGHT FACE CURB	1450.1
372	STRAIGHT FACE CURB	1467.2
373	STRAIGHT FACE CURB	1484.3
374	STRAIGHT FACE CURB	1501.4
375	STRAIGHT FACE CURB	1518.5
376	STRAIGHT FACE CURB	1535.6
377	STRAIGHT FACE CURB	1552.7
378	STRAIGHT FACE CURB	1569.8
379	STRAIGHT FACE CURB	1586.9
380	STRAIGHT FACE CURB	1604.0
381	STRAIGHT FACE CURB	1621.1
382	STRAIGHT FACE CURB	1638.2
383	STRAIGHT FACE CURB	1655.3
384	STRAIGHT FACE CURB	1672.4
385	STRAIGHT FACE CURB	1689.5
386	STRAIGHT FACE CURB	1706.6
387	STRAIGHT FACE CURB	1723.7
388	STRAIGHT FACE CURB	1740.8
389	STRAIGHT FACE CURB	1757.9
390	STRAIGHT FACE CURB	1775.0
391	STRAIGHT FACE CURB	1792.1
392	STRAIGHT FACE CURB	1809.2
393	STRAIGHT FACE CURB	1826.3
394	STRAIGHT FACE CURB	1843.4
395	STRAIGHT FACE CURB	1860.5
396	STRAIGHT FACE CURB	1877.6
397	STRAIGHT FACE CURB	1894.7
398	STRAIGHT FACE CURB	1911.8
399	STRAIGHT FACE CURB	1928.9
400	STRAIGHT FACE CURB	1946.0
401	STRAIGHT FACE CURB	1963.1
402	STRAIGHT FACE CURB	1980.2
403	STRAIGHT FACE CURB	1997.3
404	STRAIGHT FACE CURB	2014.4
405	STRAIGHT FACE CURB	2031.5
406	STRAIGHT FACE CURB	2048.6
407	STRAIGHT FACE CURB	2065.7
408	STRAIGHT FACE CURB	2082.8
409	STRAIGHT FACE CURB	2099.9
410	STRAIGHT FACE CURB	2117.0
411	STRAIGHT FACE CURB	2134.1
412	STRAIGHT FACE CURB	2151.2
413	STRAIGHT FACE CURB	2168.3
414	STRAIGHT FACE CURB	2185.4
415	STRAIGHT FACE CURB	2202.5
416	STRAIGHT FACE CURB	2219.6
417	STRAIGHT FACE CURB	2236.7
418	STRAIGHT FACE CURB	2253.8
419	STRAIGHT FACE CURB	2270.9
420	STRAIGHT FACE CURB	2288.0
421	STRAIGHT FACE CURB	2305.1
422	STRAIGHT FACE CURB	2322.2
423	STRAIGHT FACE CURB	2339.3
424	STRAIGHT FACE CURB	2356.4
425	STRAIGHT FACE CURB	2373.5
426	STRAIGHT FACE CURB	2390.6
427	STRAIGHT FACE CURB	2407.7
428	STRAIGHT FACE CURB	2424.8
429	STRAIGHT FACE CURB	2441.9
430	STRAIGHT FACE CURB	2459.0
431	STRAIGHT FACE CURB	2476.1
432	STRAIGHT FACE CURB	2493.2
433	STRAIGHT FACE CURB	2510.3
434	STRAIGHT FACE CURB	2527.4
435	STRAIGHT FACE CURB	2544.5
436	STRAIGHT FACE CURB	2561.6
437	STRAIGHT FACE CURB	2578.7
438	STRAIGHT FACE CURB	2595.8
439	STRAIGHT FACE CURB	2612.9
440	STRAIGHT FACE CURB	2630.0
441	STRAIGHT FACE CURB	2647.1
442	STRAIGHT FACE CURB	2664.2
443	STRAIGHT FACE CURB	2681.3
444	STRAIGHT FACE CURB	2698.4
445	STRAIGHT FACE CURB	2715.5
446	STRAIGHT FACE CURB	2732.6
447	STRAIGHT FACE CURB	2749.7
448	STRAIGHT FACE CURB	2766.8
449	STRAIGHT FACE CURB	2783.9
450	STRAIGHT FACE CURB	2801.0
451	STRAIGHT FACE CURB	2818.1
452	STRAIGHT FACE CURB	2835.2
453	STRAIGHT FACE CURB	2852.3
454	STRAIGHT FACE CURB	2869.4
455	STRAIGHT FACE CURB	2886.5
456	STRAIGHT FACE CURB	2903.6
457	STRAIGHT FACE CURB	2920.7
458	STRAIGHT FACE CURB	2937.8
459	STRAIGHT FACE CURB	2954.9
460	STRAIGHT FACE CURB	2972.0
461	STRAIGHT FACE CURB	2989.1
462	STRAIGHT FACE CURB	3006.2
463	STRAIGHT FACE CURB	3023.3
464	STRAIGHT FACE CURB	3040.4
465	STRAIGHT FACE CURB	3057.5
466	STRAIGHT FACE CURB	3074.6
467	STRAIGHT FACE CURB	3091.7
468	STRAIGHT FACE CURB	3108.8
469	STRAIGHT FACE CURB	3125.9
470	STRAIGHT FACE CURB	3143.0
471	STRAIGHT FACE CURB	3160.1
472	STRAIGHT FACE CURB	3177.2
473	STRAIGHT FACE CURB	3194.3
474	STRAIGHT FACE CURB	3211.4
475	STRAIGHT FACE CURB	3228.5
476	STRAIGHT FACE CURB	3245.6
477	STRAIGHT FACE CURB	3262.7
478	STRAIGHT FACE CURB	3279.8
479	STRAIGHT FACE CURB	3296.9
480	STRAIGHT FACE CURB	3314.0
481	STRAIGHT FACE CURB	3331.1
482	STRAIGHT FACE CURB	3348.2
483	STRAIGHT FACE CURB	3365.3
484	STRAIGHT FACE CURB	3382.4
485	STRAIGHT FACE CURB	3399.5
486	STRAIGHT FACE CURB	3416.6
487	STRAIGHT FACE CURB	3433.7
488	STRAIGHT FACE CURB	3450.8
489	STRAIGHT FACE CURB	3467.9
490	STRAIGHT FACE CURB	3485.0
491	STRAIGHT FACE CURB	3502.1
492	STRAIGHT FACE CURB	3519.2
493	STRAIGHT FACE CURB	3536.3
494	STRAIGHT FACE CURB	3553.4
495	STRAIGHT FACE CURB	3570.5
496	STRAIGHT FACE CURB	3587.6
497	STRAIGHT FACE CURB	3604.7
498	STRAIGHT FACE CURB	3621.8
499	STRAIGHT FACE CURB	3638.9
500	STRAIGHT FACE CURB	3656.0
501	STRAIGHT FACE CURB	3673.1
502	STRAIGHT FACE CURB	3690.2
503	STRAIGHT FACE CURB	3707.3
504	STRAIGHT FACE CURB	3724.4
505	STRAIGHT FACE CURB	3741.5
506	STRAIGHT FACE CURB	3758.6
507	STRAIGHT FACE CURB	3775.7
508	STRAIGHT FACE CURB	3792.8
509	STRAIGHT FACE CURB	3809.9
510	STRAIGHT FACE CURB	3827.0
511	STRAIGHT FACE CURB	3844.1
512	STRAIGHT FACE CURB	3861.2
513	STRAIGHT FACE CURB	3878.3
514	STRAIGHT FACE CURB	3895.4
515	STRAIGHT FACE CURB	3912.5
516	STRAIGHT FACE CURB	3929.6
517	STRAIGHT FACE CURB	3946.7
518	STRAIGHT FACE CURB	3963.8
519	STRAIGHT FACE CURB	3980.9
520	STRAIGHT FACE CURB	3998.0
521	STRAIGHT FACE CURB	4015.1
522	STRAIGHT FACE CURB	4032.2
523	STRAIGHT FACE CURB	4049.3
524	STRAIGHT FACE CURB	4066.4
525	STRAIGHT FACE CURB	4083.5
526	STRAIGHT FACE CURB	4100.6
527	STRAIGHT FACE CURB	4117.7
528	STRAIGHT FACE CURB	4134.8
529	STRAIGHT FACE CURB	4151.9
530	STRAIGHT FACE CURB	4169.0
531	STRAIGHT FACE CURB	4186.1
532	STRAIGHT FACE CURB	4203.2
533	STRAIGHT FACE CURB	4220.3
534	STRAIGHT FACE CURB	4237.4
535	STRAIGHT FACE CURB	4254.5
536	STRAIGHT FACE CURB	4271.6
537	STRAIGHT FACE CURB	4288.7
538	STRAIGHT FACE CURB	4305.8
539	STRAIGHT FACE CURB	4322.9
540	STRAIGHT FACE CURB	4340.0
541	STRAIGHT FACE CURB	4357.1
542	STRAIGHT FACE CURB	4374.2
543	STRAIGHT FACE CURB	4391.3
544	STRAIGHT FACE CURB	4408.4
545	STRAIGHT FACE CURB	4425.5
546	STRAIGHT FACE CURB	4442.6
547	STRAIGHT FACE CURB	4459.7
548	STRAIGHT FACE CURB	4476.8
549	STRAIGHT FACE CURB	4493.9
550	STRAIGHT FACE CURB	4511.0
551	STRAIGHT FACE CURB	4528.1
552	STRAIGHT FACE CURB	4545.2
553	STRAIGHT FACE CURB	4562.3
554	STRAIGHT FACE CURB	4579.4
555	STRAIGHT FACE CURB	4596.5
556	STRAIGHT FACE CURB	4613.6
557	STRAIGHT FACE CURB	4630.7
558	STRAIGHT FACE CURB	4647.8
559	STRAIGHT FACE CURB	4664.9
560	STRAIGHT FACE CURB	4682.0
561	STRAIGHT FACE CURB	4699.1
562	STRAIGHT FACE CURB	4716.2
563	STRAIGHT FACE CURB	4733.3
564	STRAIGHT FACE CURB	4750.4
565	STRAIGHT FACE CURB	4767.5
566	STRAIGHT FACE CURB	4784.6
567	STRAIGHT FACE CURB	4801.7
568	STRAIGHT FACE CURB	4818.8
569	STRAIGHT FACE CURB	4835.9
570	STRAIGHT FACE CURB	4853.0
571	STRAIGHT FACE CURB	4870.1
572	STRAIGHT FACE CURB	4887.2
573	STRAIGHT FACE CURB	4904.3
574	STRAIGHT FACE CURB	4921.4
575	STRAIGHT FACE CURB	4938.5
576	STRAIGHT FACE CURB	4955.6
577	STRAIGHT FACE CURB	4972.7
578	STRAIGHT FACE CURB	4989.8
579	STRAIGHT FACE CURB	5006.9
580	STRAIGHT FACE CURB	5024.0
581	STRAIGHT FACE CURB	5041.1
582	STRAIGHT FACE CURB	5058.2
583	STRAIGHT FACE CURB	5075.3
584	STRAIGHT FACE CURB	5092.4
585	STRAIGHT FACE CURB	5109.5
586	STRAIGHT FACE CURB	5126.6
587	STRAIGHT FACE CURB	5143.7
588	STRAIGHT FACE CURB	5160.8
589	STRAIGHT FACE CURB	5177.9
590	STRAIGHT FACE CURB	5195.0
591	STRAIGHT FACE CURB	5212.1
592	STRAIGHT FACE CURB	5229.2
593	STRAIGHT FACE CURB	5246.3
594	STRAIGHT FACE CURB	5263.4
595	STRAIGHT FACE CURB	5280.5
596	STRAIGHT FACE CURB	5297.6
597	STRAIGHT FACE CURB	5314.7
598	STRAIGHT FACE CURB	5331.8
599	STRAIGHT FACE CURB	5348.9
600	STRAIGHT FACE CURB	5366.0
601	STRAIGHT FACE CURB	5383.1
602	STRAIGHT FACE CURB	5400.2
603	STRAIGHT FACE CURB	5417.3
604	STRAIGHT FACE CURB	5434.4
605	STRAIGHT FACE CURB	5451.5
606	STRAIGHT FACE CURB	5468.6
607	STRAIGHT FACE CURB	5485.7
608	STRAIGHT FACE CURB	5502.8
609	STRAIGHT FACE CURB	5519.9
610	STRAIGHT FACE CURB	5537.0
611	STRAIGHT FACE CURB	5554.1
612	STRAIGHT FACE CURB	5571.2
613	STRAIGHT FACE CURB	5588.3
614	STRAIGHT FACE CURB	5605.4
615	STRAIGHT FACE CURB	5622.5
616	STRAIGHT FACE CURB	5639.6
617	STRAIGHT FACE CURB	5656.7
618	STRAIGHT FACE CURB	5673.8
619	STRAIGHT FACE CURB	5690.9
620	STRAIGHT FACE CURB	5708.0
621	STRAIGHT FACE CURB	5725.1
622	STRAIGHT FACE CURB	5742.2
623	STRAIGHT FACE CURB	5759.3
624	STRAIGHT FACE CURB	5776.4
625	STRAIGHT FACE CURB	5793.5
626	STRAIGHT FACE CURB	5810.6
627	STRAIGHT FACE CURB	5827.7
628	STRAIGHT FACE CURB	5844.8
629	STRAIGHT FACE CURB	5861.9
630	STRAIGHT	



LOCATION	DESCRIPTION	LENGTH (FT)
1	STANDARD FACE CURB	4.3
2	STANDARD FACE CURB	8.2
3	STANDARD FACE CURB	8.2
4	STANDARD FACE CURB	14.8
5	STANDARD FACE CURB	14.8
6	STANDARD FACE CURB	9.8
7	STANDARD FACE CURB	3.8
8	STANDARD FACE CURB	3.2
9	STANDARD FACE CURB	3.2
10	STANDARD FACE CURB	3.4
11	STANDARD FACE CURB	8.1
12	STANDARD FACE CURB	8.2
13	STANDARD FACE CURB	8.2
14	STANDARD FACE CURB	8.2
15	STANDARD FACE CURB	8.2
16	STANDARD FACE CURB	3.2
17	STANDARD FACE CURB	3.2
18	STANDARD FACE CURB	3.2
19	STANDARD FACE CURB	3.2
20	STANDARD FACE CURB	3.2
21	STANDARD FACE CURB	3.2
22	STANDARD FACE CURB	3.2
23	STANDARD FACE CURB	3.2
24	STANDARD FACE CURB	3.2
25	STANDARD FACE CURB	3.2
26	STANDARD FACE CURB	3.2
27	STANDARD FACE CURB	3.2
28	STANDARD FACE CURB	3.2
29	STANDARD FACE CURB	3.2
30	STANDARD FACE CURB	3.2
31	STANDARD FACE CURB	3.2
32	STANDARD FACE CURB	3.2
33	STANDARD FACE CURB	3.2
34	STANDARD FACE CURB	3.2
35	STANDARD FACE CURB	3.2
36	STANDARD FACE CURB	3.2
37	STANDARD FACE CURB	3.2
38	STANDARD FACE CURB	3.2
39	STANDARD FACE CURB	3.2
40	STANDARD FACE CURB	3.2
41	STANDARD FACE CURB	3.2

GENERAL NOTES:

1. ALL DIMENSIONS ARE INDICATED UNLESS OTHERWISE NOTED.
2. ALL DIMENSIONS ARE INDICATED UNLESS OTHERWISE NOTED.
3. ALL DIMENSIONS ARE INDICATED UNLESS OTHERWISE NOTED.
4. ALL DIMENSIONS ARE INDICATED UNLESS OTHERWISE NOTED.
5. ALL DIMENSIONS ARE INDICATED UNLESS OTHERWISE NOTED.
6. ALL DIMENSIONS ARE INDICATED UNLESS OTHERWISE NOTED.
7. ALL DIMENSIONS ARE INDICATED UNLESS OTHERWISE NOTED.
8. ALL DIMENSIONS ARE INDICATED UNLESS OTHERWISE NOTED.
9. ALL DIMENSIONS ARE INDICATED UNLESS OTHERWISE NOTED.
10. ALL DIMENSIONS ARE INDICATED UNLESS OTHERWISE NOTED.
11. ALL DIMENSIONS ARE INDICATED UNLESS OTHERWISE NOTED.
12. ALL DIMENSIONS ARE INDICATED UNLESS OTHERWISE NOTED.
13. ALL DIMENSIONS ARE INDICATED UNLESS OTHERWISE NOTED.
14. ALL DIMENSIONS ARE INDICATED UNLESS OTHERWISE NOTED.
15. ALL DIMENSIONS ARE INDICATED UNLESS OTHERWISE NOTED.
16. ALL DIMENSIONS ARE INDICATED UNLESS OTHERWISE NOTED.
17. ALL DIMENSIONS ARE INDICATED UNLESS OTHERWISE NOTED.
18. ALL DIMENSIONS ARE INDICATED UNLESS OTHERWISE NOTED.
19. ALL DIMENSIONS ARE INDICATED UNLESS OTHERWISE NOTED.
20. ALL DIMENSIONS ARE INDICATED UNLESS OTHERWISE NOTED.
21. ALL DIMENSIONS ARE INDICATED UNLESS OTHERWISE NOTED.
22. ALL DIMENSIONS ARE INDICATED UNLESS OTHERWISE NOTED.
23. ALL DIMENSIONS ARE INDICATED UNLESS OTHERWISE NOTED.
24. ALL DIMENSIONS ARE INDICATED UNLESS OTHERWISE NOTED.
25. ALL DIMENSIONS ARE INDICATED UNLESS OTHERWISE NOTED.
26. ALL DIMENSIONS ARE INDICATED UNLESS OTHERWISE NOTED.
27. ALL DIMENSIONS ARE INDICATED UNLESS OTHERWISE NOTED.
28. ALL DIMENSIONS ARE INDICATED UNLESS OTHERWISE NOTED.
29. ALL DIMENSIONS ARE INDICATED UNLESS OTHERWISE NOTED.
30. ALL DIMENSIONS ARE INDICATED UNLESS OTHERWISE NOTED.
31. ALL DIMENSIONS ARE INDICATED UNLESS OTHERWISE NOTED.
32. ALL DIMENSIONS ARE INDICATED UNLESS OTHERWISE NOTED.
33. ALL DIMENSIONS ARE INDICATED UNLESS OTHERWISE NOTED.
34. ALL DIMENSIONS ARE INDICATED UNLESS OTHERWISE NOTED.
35. ALL DIMENSIONS ARE INDICATED UNLESS OTHERWISE NOTED.
36. ALL DIMENSIONS ARE INDICATED UNLESS OTHERWISE NOTED.
37. ALL DIMENSIONS ARE INDICATED UNLESS OTHERWISE NOTED.
38. ALL DIMENSIONS ARE INDICATED UNLESS OTHERWISE NOTED.
39. ALL DIMENSIONS ARE INDICATED UNLESS OTHERWISE NOTED.
40. ALL DIMENSIONS ARE INDICATED UNLESS OTHERWISE NOTED.
41. ALL DIMENSIONS ARE INDICATED UNLESS OTHERWISE NOTED.

NO.	DESCRIPTION	UNIT	QTY	PRICE	TOTAL
1	STANDARD FACE CURB	LINEAL FT	41	1.00	41.00
2	STANDARD FACE CURB	LINEAL FT	41	1.00	41.00
3	STANDARD FACE CURB	LINEAL FT	41	1.00	41.00
4	STANDARD FACE CURB	LINEAL FT	41	1.00	41.00
5	STANDARD FACE CURB	LINEAL FT	41	1.00	41.00
6	STANDARD FACE CURB	LINEAL FT	41	1.00	41.00
7	STANDARD FACE CURB	LINEAL FT	41	1.00	41.00
8	STANDARD FACE CURB	LINEAL FT	41	1.00	41.00
9	STANDARD FACE CURB	LINEAL FT	41	1.00	41.00
10	STANDARD FACE CURB	LINEAL FT	41	1.00	41.00
11	STANDARD FACE CURB	LINEAL FT	41	1.00	41.00
12	STANDARD FACE CURB	LINEAL FT	41	1.00	41.00
13	STANDARD FACE CURB	LINEAL FT	41	1.00	41.00
14	STANDARD FACE CURB	LINEAL FT	41	1.00	41.00
15	STANDARD FACE CURB	LINEAL FT	41	1.00	41.00
16	STANDARD FACE CURB	LINEAL FT	41	1.00	41.00
17	STANDARD FACE CURB	LINEAL FT	41	1.00	41.00
18	STANDARD FACE CURB	LINEAL FT	41	1.00	41.00
19	STANDARD FACE CURB	LINEAL FT	41	1.00	41.00
20	STANDARD FACE CURB	LINEAL FT	41	1.00	41.00
21	STANDARD FACE CURB	LINEAL FT	41	1.00	41.00
22	STANDARD FACE CURB	LINEAL FT	41	1.00	41.00
23	STANDARD FACE CURB	LINEAL FT	41	1.00	41.00
24	STANDARD FACE CURB	LINEAL FT	41	1.00	41.00
25	STANDARD FACE CURB	LINEAL FT	41	1.00	41.00
26	STANDARD FACE CURB	LINEAL FT	41	1.00	41.00
27	STANDARD FACE CURB	LINEAL FT	41	1.00	41.00
28	STANDARD FACE CURB	LINEAL FT	41	1.00	41.00
29	STANDARD FACE CURB	LINEAL FT	41	1.00	41.00
30	STANDARD FACE CURB	LINEAL FT	41	1.00	41.00
31	STANDARD FACE CURB	LINEAL FT	41	1.00	41.00
32	STANDARD FACE CURB	LINEAL FT	41	1.00	41.00
33	STANDARD FACE CURB	LINEAL FT	41	1.00	41.00
34	STANDARD FACE CURB	LINEAL FT	41	1.00	41.00
35	STANDARD FACE CURB	LINEAL FT	41	1.00	41.00
36	STANDARD FACE CURB	LINEAL FT	41	1.00	41.00
37	STANDARD FACE CURB	LINEAL FT	41	1.00	41.00
38	STANDARD FACE CURB	LINEAL FT	41	1.00	41.00
39	STANDARD FACE CURB	LINEAL FT	41	1.00	41.00
40	STANDARD FACE CURB	LINEAL FT	41	1.00	41.00
41	STANDARD FACE CURB	LINEAL FT	41	1.00	41.00

AECOM

Town of Lept
2009 Infrastructure Improvements

Sheet 1 of 2
PROJECT NUMBER: 5546-021-001
DRAWING NUMBER: 02-CM1001
ISSUE/REVISION: A